

WINDHAM  COMMONS



ASTERFORD I

2-STORY HOME, 4 BEDROOMS, 2 1/2 BATHS, 2,657 SQ FT

In an effort to offer the best value, promote improvement and manage availability; Capstone Custom Homes & Windham Homes reserves the right to modify or change floor plans, materials, features, prices and information content without notice or obligation. Floor plans, elevations, dimensions, square footages and maps are approximate and renderings are not to scale. © 2009 Capstone Custom Homes, Inc.

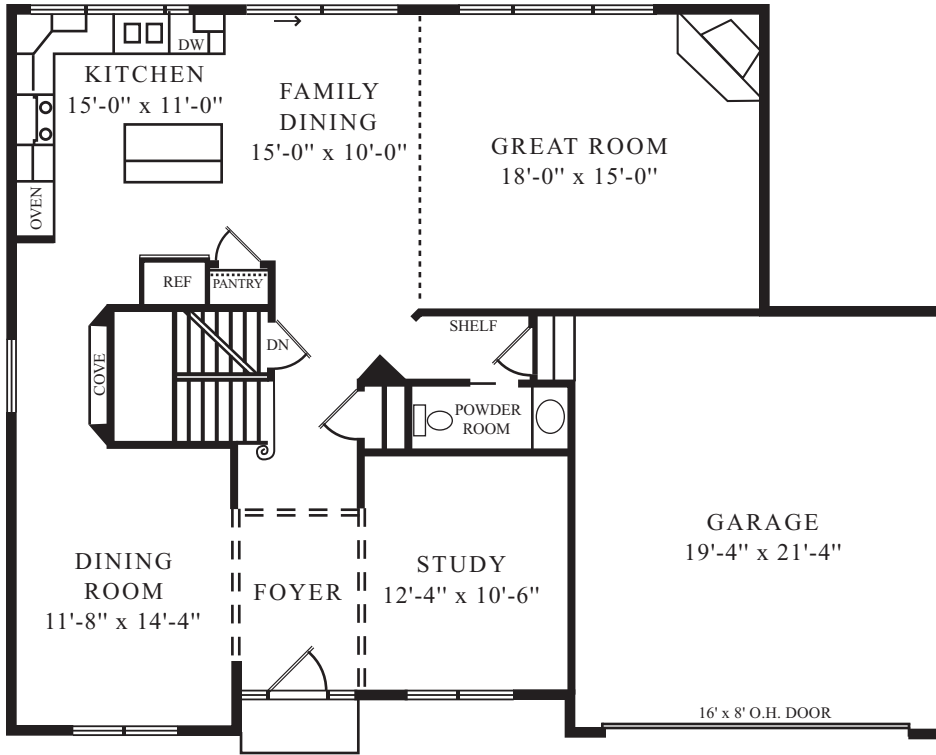
THE WINDHAM GROUP 630-466-7400



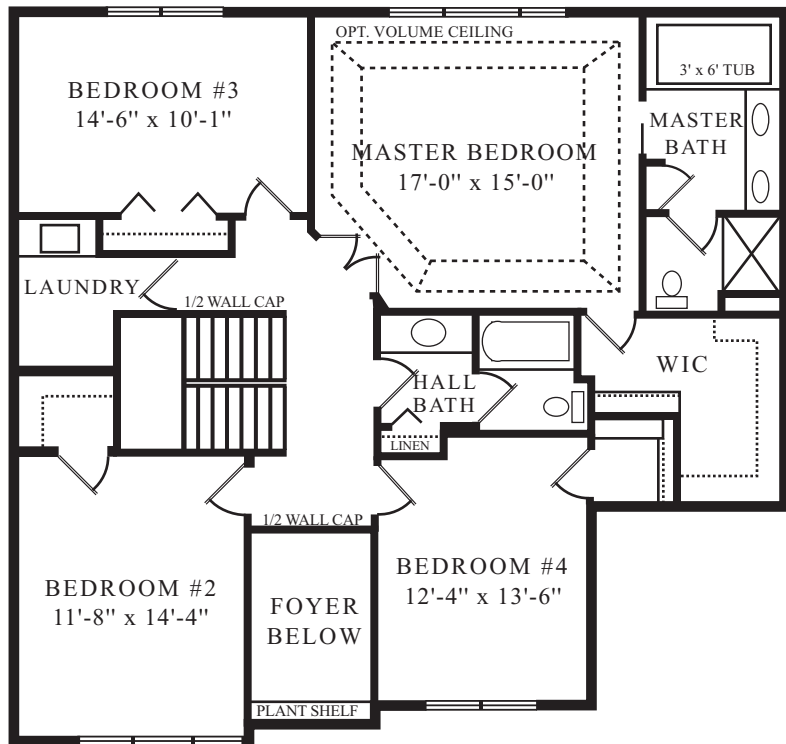
[June 2009]

ASTERFORD I

2-STORY HOME, 4 BEDROOMS, 2 1/2 BATHS, 2,657 SQ FT



SECOND FLOOR
1,321/1,378 SQ FT



© 2009 Capstone Custom Homes, Inc.